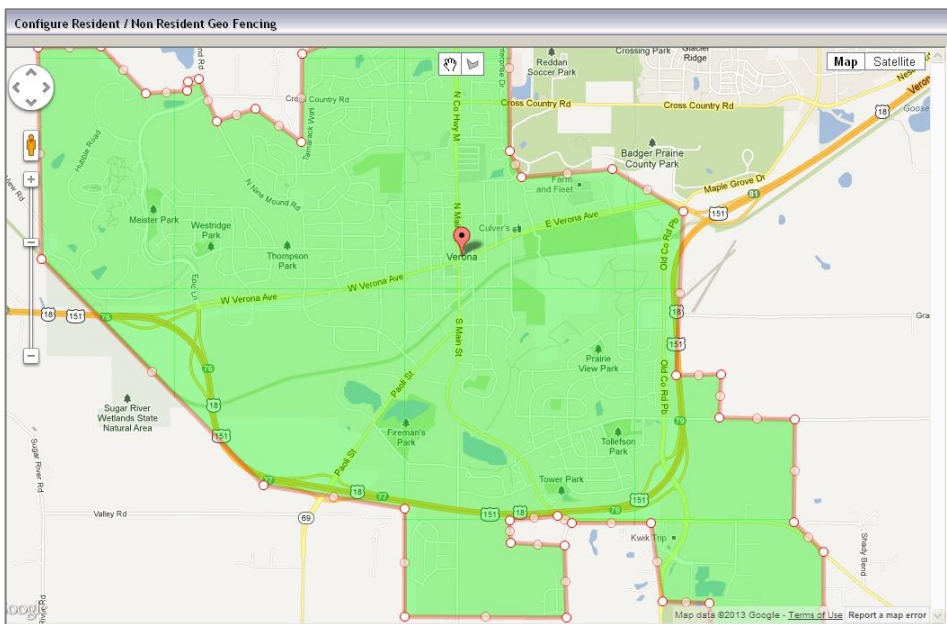


Google Geocoding for Qualifying Residency

There are many methods to choose from when qualifying residency within SportsMan. Some choose to manually qualify residency (i.e. city utility bill), while other organizations choose automated options by specifying city name, zip code or areas. All the options have worked great over the years, but now you have another option. In the newly released SportsMan 479 application, you may choose to qualify residents using the Google geocoding interface. What does this mean exactly? It means you now have the ability to draw your organization's boundaries (geo fence) on a map, so that when an address is entered into SportsMan or ActivityReg, it will determine whether or not the address is within the organization's boundaries to qualify residency and apply the correct resident fee.

To access the Google geocode interface in SportsMan, go to File > Administration > Site Configuration, then select the Site you would like to edit. From the Site Configuration screen, select the Group Settings tab. On the Group Settings screen, choose the Custom option for Residency Qualification Method, then check Use Google Geocoding, and select the button Setup Google Geocoding. Follow the instructions on the Configure Resident/Non Resident Geo Fencing screen to generate the geo fence boundaries for your organization. From the same screen you may test resident addresses.

Of course, if you have any questions, please contact our support department!



Upcoming User Group Sessions

It has almost been a year since we first introduced and started the SportsMan user group sessions. We are still receiving very positive feedback and many customers have requested that we continue hosting the sessions. Please let us know if there are any specific topics that you would like us to cover in the sessions.

Here's the schedule for the next quarter:

Region 1 – 4/16/2013, 11:00am ET:
CT, MA, ME, NH, RI, VT

Region 2 – 4/16/2013, 1:00pm ET:
AL, DE, FL, GA, IN, KY, MD, MI, MS, NC, NJ, NY, OH, PA, SC, TN, VA, WV

Region 3 – 5/21/2013, 10:00am CT: AR, IA, IL, KS, LA, MN, MO, ND, NE, OK, SD, TX, WI

Region 4 – 5/21/2013, 11:00am MT:
AK, AZ, CA, CO, HI, ID, MT, NM, NV, OR, WA, WY

Region 5 – 6/18/2013, 9:00am MT:
UT (excluding SLCo)

Region 6 – 6/18/2013, 11:00am MT:
Salt Lake County

If you have any questions regarding the regions, dates, or times, please contact Paul at (801) 572-3570 x311 or pgines@peakinfo.com.

New Phone System

Peak has recently implemented a new phone system. The phone system has numerous new features and capabilities that will enable us to serve you even better. For the best response, please select the Tech Support option when you call, thanks!